

MORE POSSIBILITIES! NEW GENERATION



**RICOH
G5 & G6
SERIES**

DISCOVER NEW PRINTING POSSIBILITIES.



**CHOOSE THE PRINTER THATS JUST RIGHT FOR YOU.
OFFER YOUR CLIENTS A WIDER RANGE OF PRINTING SOLUTIONS.
UPGRADE YOUR PRINTER AS YOUR BUSINESS GROWS.**



+27 (0) 10 020 9999

sales@midcomp.co.za

www.midcomp.co.za

ALL PRINTERS USES:

**HandTop™
UV PRINTERS**



**HANGLORY
GROUP**

CDiS
PREMIUM DIGITAL INKS

CBiS
BULK INK DELIVERY SYSTEM

Machine specifications Gen5 & Gen6.

Model	HT1610UV		HT2512UV		HT2518UV		H3116UV		H3020UV			
Printhead	Ricoh Gen5	Ricoh Gen6	Ricoh Gen5	Ricoh Gen6	Ricoh Gen5	Ricoh Gen6	Ricoh Gen5	Ricoh Gen6	Ricoh Gen5	Ricoh Gen6		
Quantity of Printheads	2-4pcs (Single Row)	2-4pcs (Single Row)	2-8pcs (Double Row)	2-8pcs (Double Row)	2-8pcs (Double Row)	2-8pcs (Double Row)	2-8pcs (Double Row)	2-8pcs (Double Row)	2-8pcs (Double Row)	2-8pcs (Double Row)		
Resolution	1200 x 1200dpi											
Print Speed	Draft Mode		20m ² /hr	27m ² /hr	42m ² /hr	60m ² /hr	48m ² /hr	62m ² /hr	50m ² /hr	68m ² /hr	54m ² /hr	70m ² /hr
	Production Mode		13m ² /hr	20m ² /hr	30m ² /hr	45m ² /hr	32m ² /hr	42m ² /hr	36m ² /hr	45m ² /hr	38m ² /hr	46m ² /hr
	Quality Mode		10m ² /hr	15m ² /hr	21m ² /hr	32m ² /hr	23m ² /hr	34m ² /hr	23m ² /hr	36m ² /hr	27m ² /hr	37m ² /hr
Print Mode	Unidirectional & Bidirectional											
Max. Print Width	1.6m x 1.0m		2.5m x 1.2m		2.5m x 1.8m		3.0m x 1.5m		3.0m x 2.0m			
Material Thickness	100mm											
Applications	Both Rigid & Flexible flat materials.											
Inks	Eco-Friendly UV Curing inks (VOC Free)											
Colours	C, M, Y, K, Lc, Lm, W (Varnish is optional when there is no Lc & Lm)											
Image Format	Adobe Postscript level 3, PDF, JPEG, TIFF, EPS, AI											
Machine Size	3.44m x 2.21m x 1.28m		4.67m x 2.51m x 1.38m		4.67m x 3.03m x 1.38m		5.22m x 2.71m x 1.38m		5.22m x 3.24m x 1.38m			
Gross Net Weight / Gross	W: 570Kg	G: 990Kg	W: 1150Kg	G: 1745Kg	W: 1300Kg	G: 2000Kg	W: 1450Kg	G: 2160Kg	W: 1520Kg	G: 2330Kg		
Power Consumption	5.3KW(27A)		8.3KW(20A)									
Power Supply	230VAC.50Hz L/N/PE		400VAC.50Hz 3P/N/PE									
Certification	CE, FCC											
RIP Software	Caldera / Onyx											
UV Curing System	LED UV Curing System											
Interface	High Speed PCIE											
Operating Environment	Temperature: 18°C-30°C(64°F-86°F) Relative Humidity: 30%~70%(non-condensing)											

PLEASE NOTE: ABOVE INFORMATION IS FOR REFERENCE ONLY & ARE SUBJECT TO CHANGE WITHOUT PRIOR NOTICE. FOR LATEST UPDATED MACHINE INFO. PLEASE CONTACT US: sales@clearsol.co.za - www.clearsol.co.za

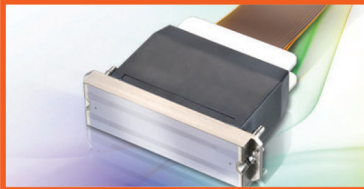
Machine Features

- Automatic Negative Pressure System**
Negative pressure is automatically controlled & can be set through data form software, making it more stable & extending the life of the negative pressure pump.
- Ricoh Gen5 Print Heads (1 Head with 2 colours)**
Featuring variable dots, true grayscale imaging 7pl, 14pl, & 21pl.
Ricoh Gen6 Print Heads (1 Head with 2 colours)
Featuring variable dots, true grayscale imaging 5pl, 10pl, & 15pl.
- LED Curing System**
Instant curing by lamps for faster production & flexibility to control curing during printing.
- Automatic Height Adjustment System**
Automatically detects the media height up to 100mm in thickness & calibrates printhead distance for variable dot, ensuring best print quality.
- Emergency Stop Switches**
Emergency stop switched placed at on each corner of the printer, ensuring operations can be stopped in case of an emergency.
- Power Vacuum & Lamp Switches**
Easy switch control unit to control lamps & vacuum pump.
- Mechanical Pin Registration System**
Pin registration for accurate consistent placement of rigid materials for printing.
- Reversible Vacuum Valve**
Easy load & off load of rigid materials with reverse vacuum function.
- Smart printing features**
Reversible printing function & Repeat printing mode. Both printing modes enables a higher efficiency in productivity.
- Printing Speed**
Top printing speed: up to 91m²/hr (HT3020UV). Engineered for high quality printing & maximum productivity.
- Static suppression Kit (optional)**
Static kit eliminates static on the substrates being printed.
- On Board Control Module**
Self developed software. Convenient independent efficient control module.



RICOH
imagine. change.

Print head technology



Grayscale inkjet technology not only saves on ink cost, but ensures your printed images are more vibrant & appear more realistic.

RICOH G5

NOZZLE QUANTITY: 1280
PHYSICAL RESOLUTION: 600dpi
PICO-LITER: VARIABLE 7pl, 14pl, 21pl
MAX OPERATING FREQUENCY: 30Khz
EFFECTIVE PRINT WIDTH: 54.1mm

RICOH G6

NOZZLE QUANTITY: 1280
PHYSICAL RESOLUTION: 600dpi
PICO-LITER: VARIABLE 5pl, 10pl, 15pl
MAX OPERATING FREQUENCY: 50Khz
EFFECTIVE PRINT WIDTH: 54.1mm



+27 (0) 10 020 9999

sales@midcomp.co.za

www.midcomp.co.za

MORE POSSIBILITIES!